

Grab Starter 5, Parent Function Project Paper, and Translations/Dilations Worksheet

Sep 6-12:46 PM

Starter  
Homework Questions  
1.3 Parent Functions  
HW 1.3 Translations and Dilations Worksheet

Sep 6-12:46 PM

Homework Questions  
#61  
horizontal:  $\frac{4x}{x^3} = \frac{4}{x^2}$   
 $\frac{4x-4}{x^3+8}$   
 $y=0$   
 Vertical:  $x^3 - 8 \neq 0$   
 $\sqrt[3]{x^3} \neq \sqrt[3]{8}$   $x \neq 2$  ( $x=2$ )

Sep 6-12:48 PM

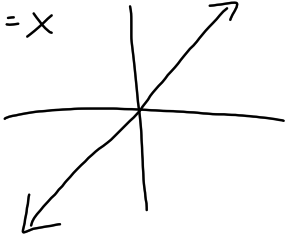
65) a

Sep 6-1:40 PM

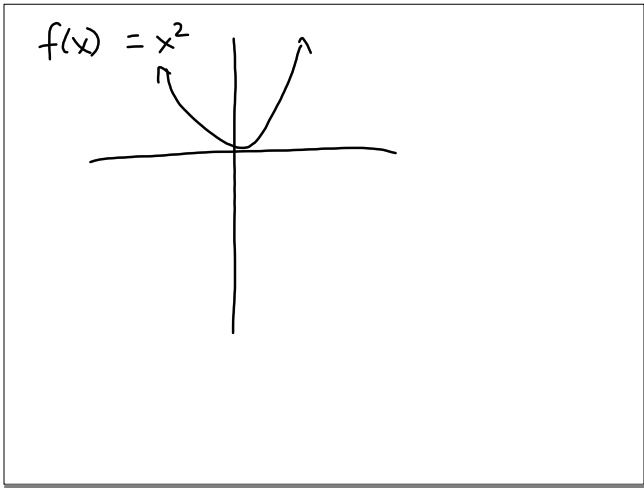
51)  $-x^2 + .03x + 5$   
 $f(-x) = -(-x)^2 + .03(-x) + 5$   
 $= -x^2 - .03x + 5$   
 neither

Sep 6-1:41 PM

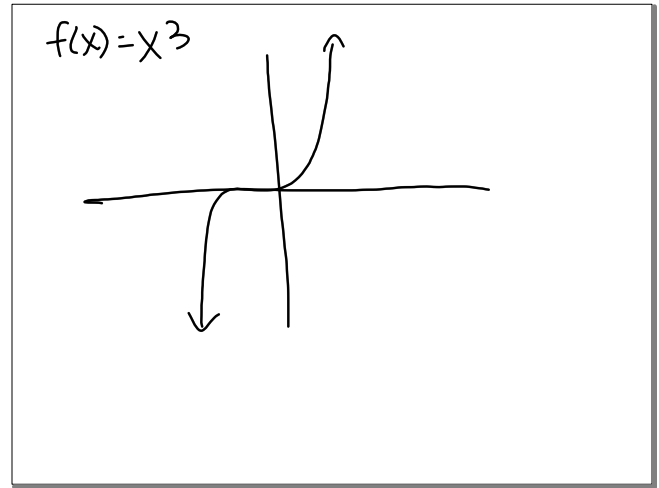
1.3 Parent Functions and Translations  
 $f(x) = x$



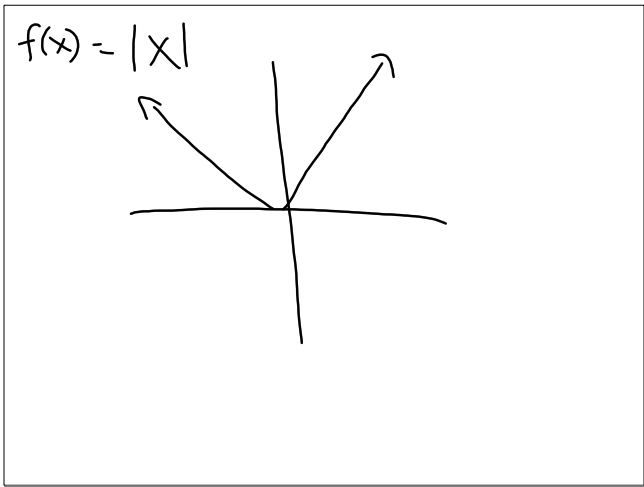
Sep 6-12:48 PM



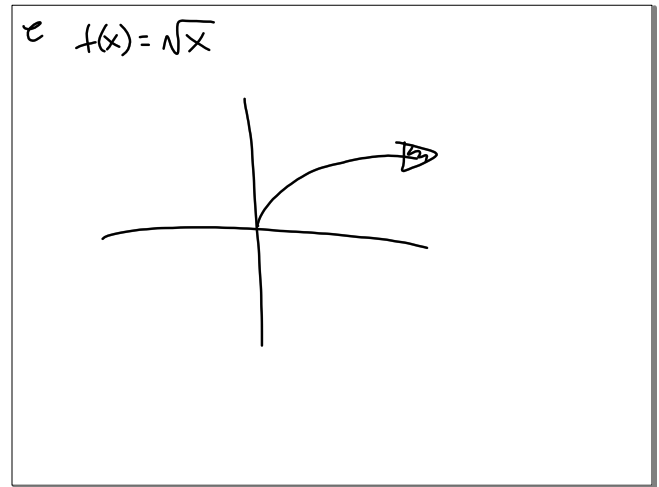
Sep 6-1:54 PM



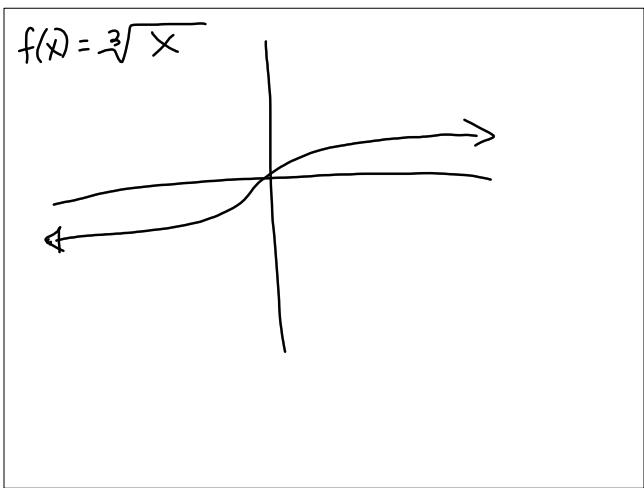
Sep 6-1:55 PM



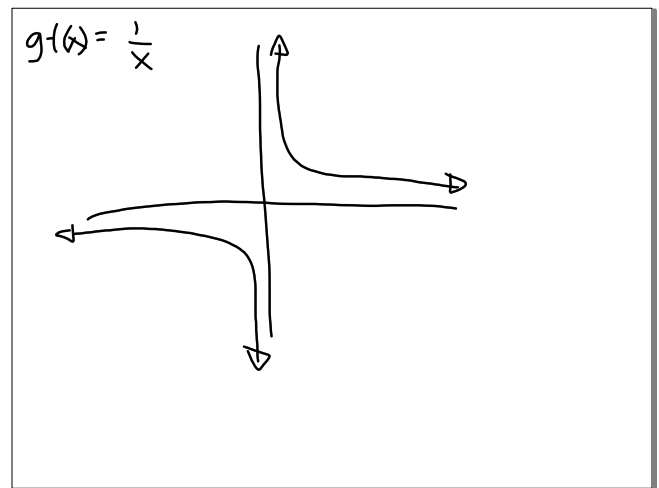
Sep 6-1:56 PM



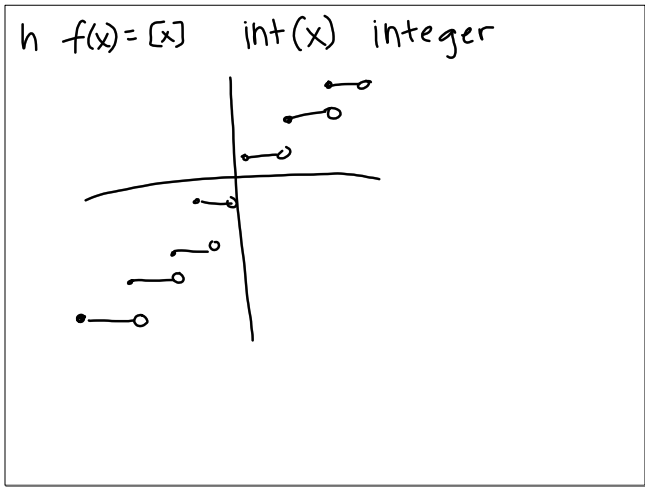
Sep 6-1:56 PM



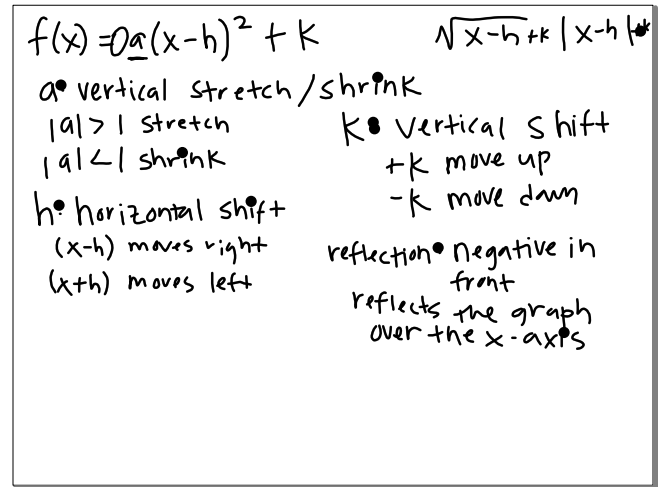
Sep 6-1:57 PM



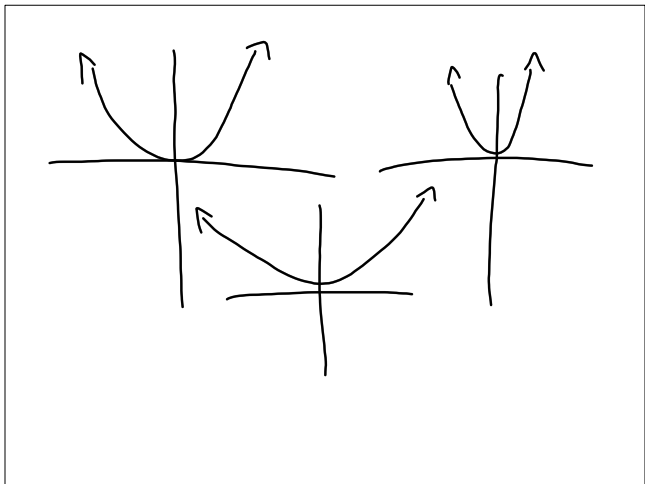
Sep 6-1:58 PM



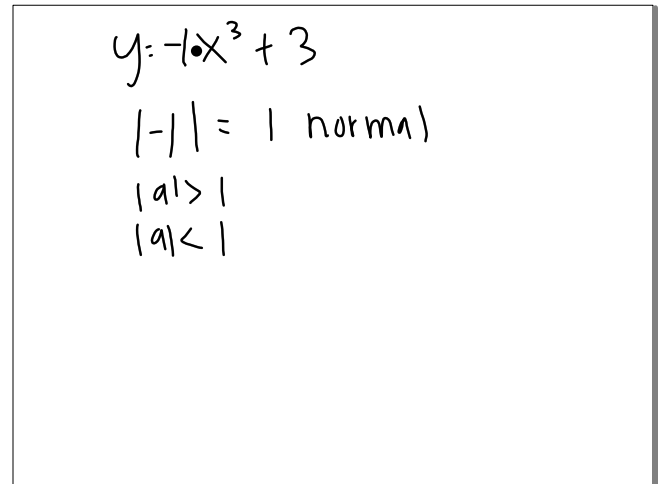
Sep 6-1:59 PM



Sep 6-2:02 PM



Sep 6-2:08 PM



Sep 6-2:12 PM