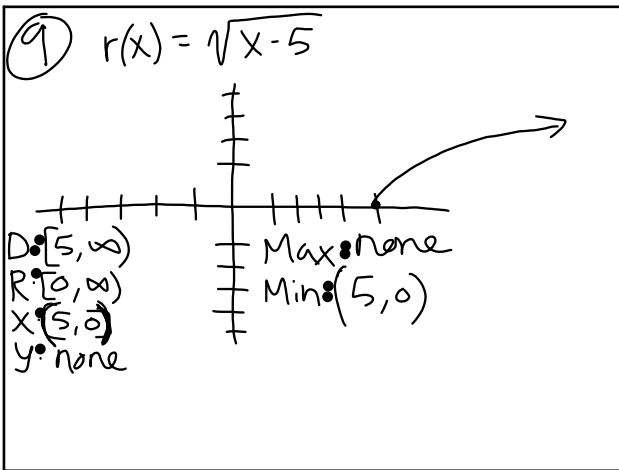


Quiz
 Starter
 Homework Questions
 Calendar Math
 3.3 Increasing, Decreasing and Constant

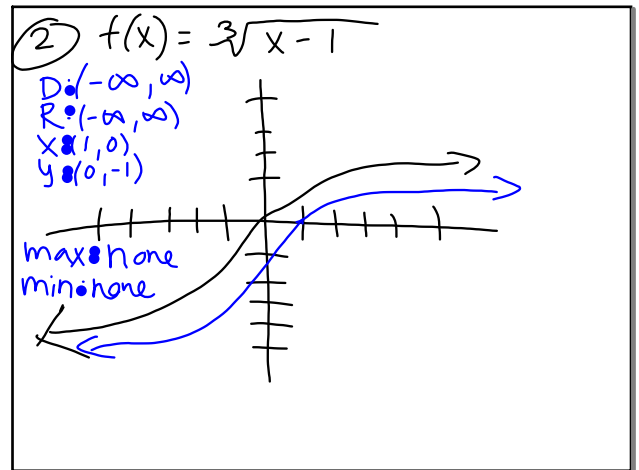
Oct 18-7:06 AM

13) $\frac{2000}{55}$ 55 $\mathbb{R} \mathbb{Z}$
 2000 students
 37 buses
 $D: [0, 2000] \{x \in \mathbb{Z} \mid 0 \leq x \leq 2000\}$
 $R: [0, 37] \{y \in \mathbb{Z} \mid 0 \leq y \leq 37\}$

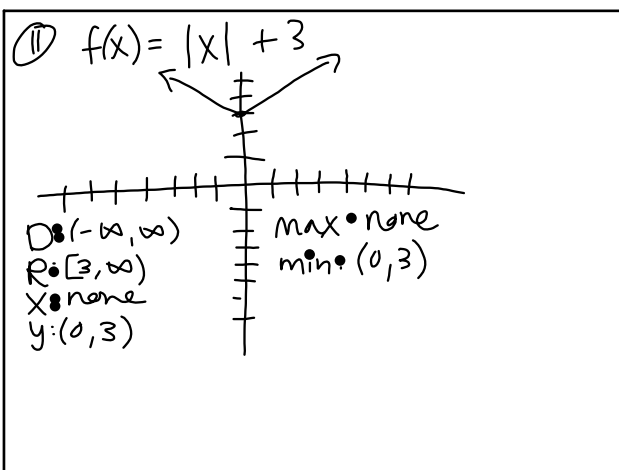
Oct 18-7:53 AM



Oct 18-7:57 AM



Oct 18-8:02 AM



Oct 18-8:05 AM

Objective from last time: Demonstrate understanding of finding domain/range, max/min, and x/y intercepts.

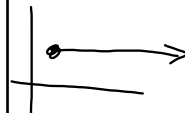
New Objective: Demonstrate understanding of finding increasing, decreasing and constant on graphs by completing the exit slip and scoring at least 80% on the 3.3 homework.

Oct 18-7:19 AM

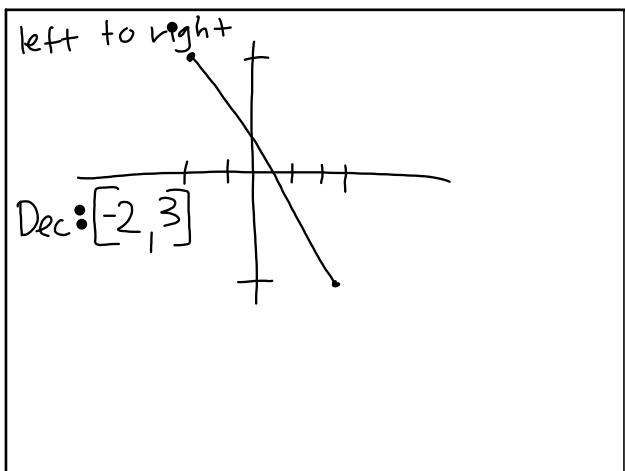
wolfram alpha.com

Oct 18-10:54 AM

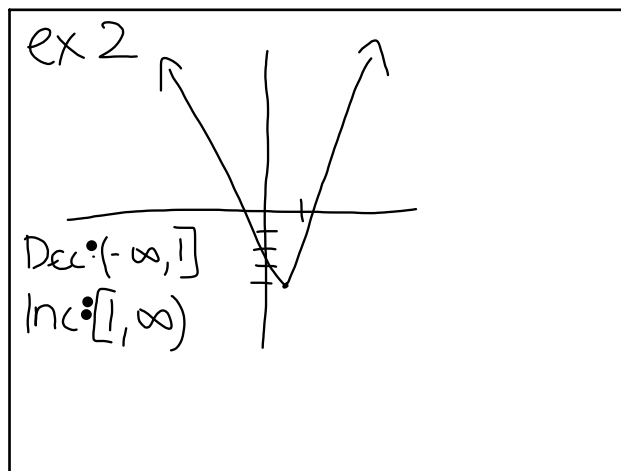
Origin: (0,0) on the x and y axis.
 Increase: Moving away from the origin
 Decrease: Moving towards the origin
 Constant: horizontal line that does not move



Oct 18-7:22 AM



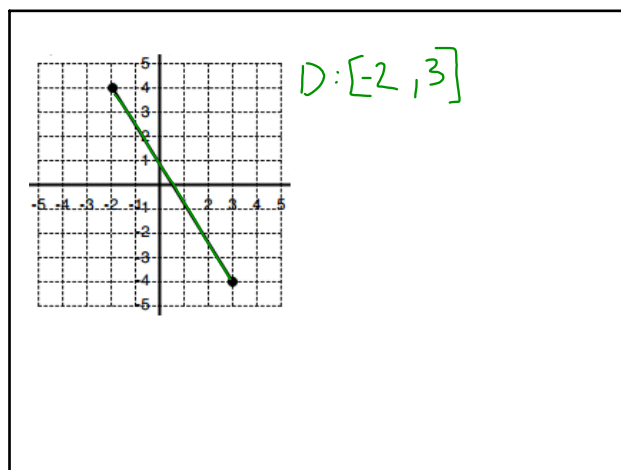
Oct 18-10:06 AM



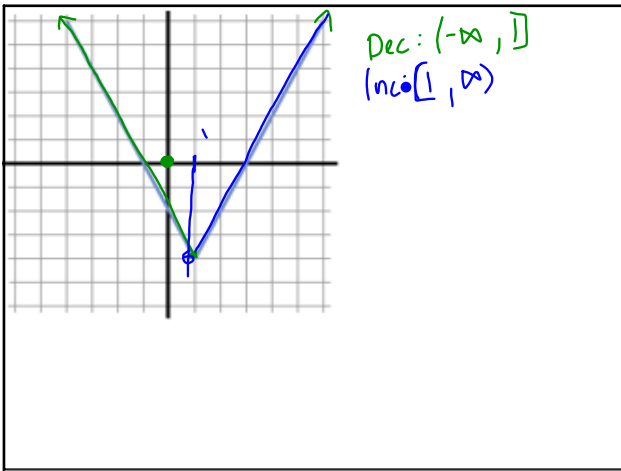
Oct 18-10:09 AM

ex 3 $U = \text{and}$
 Inc: $[-5, 3] \cup [1, 1] \cup [4, 5]$
 Dec: $(-\infty, -5] \cup [1, 4]$
 Const: $[-3, -1] \cup [5, \infty)$

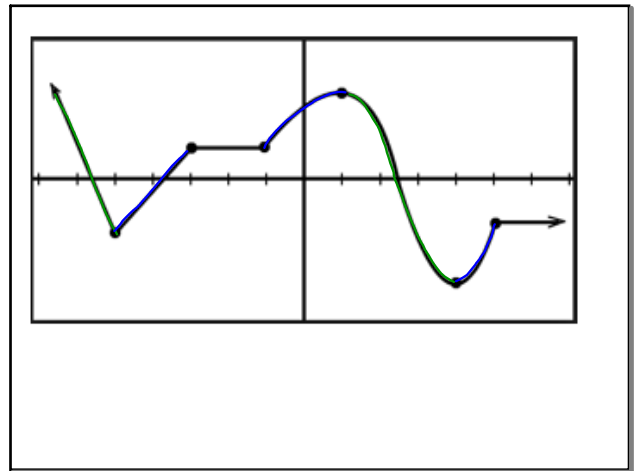
Oct 18-10:19 AM



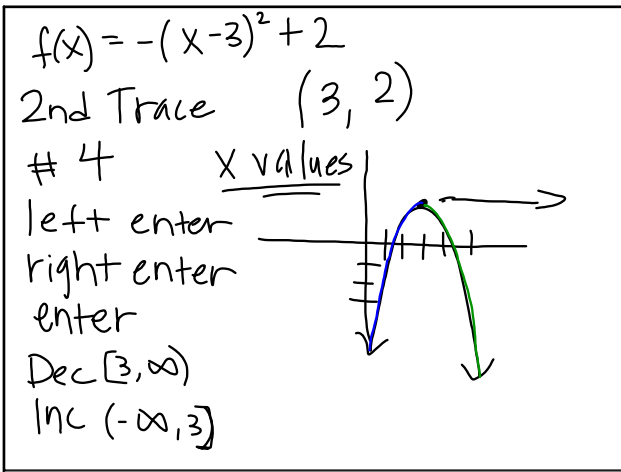
Oct 18-7:25 AM



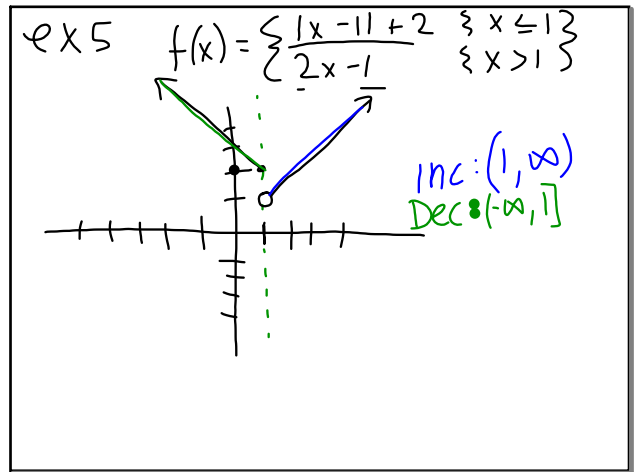
Oct 18-7:26 AM



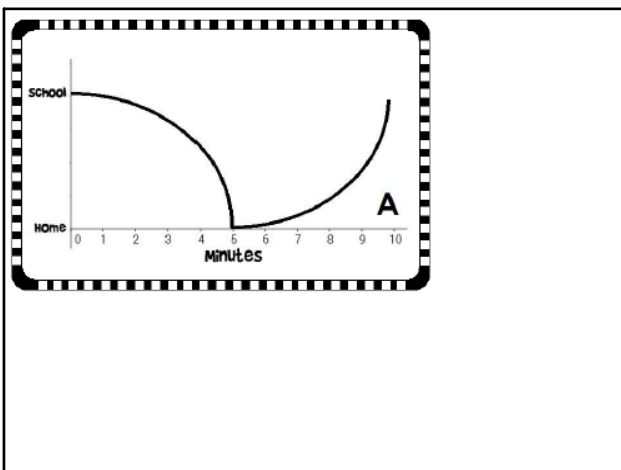
Oct 18-7:25 AM



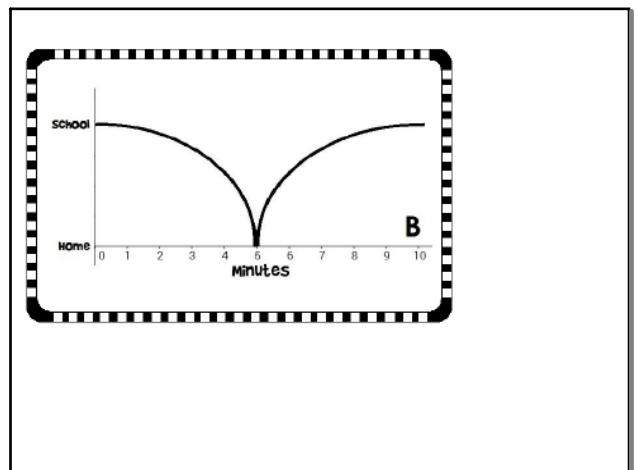
Oct 18-8:30 AM




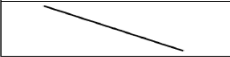
Oct 18-8:36 AM



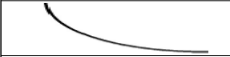



Oct 18-7:26 AM



Oct 18-7:27 AM

Linear Functions		From the Origin:
	Increasing at a steady rate	Moving away from the origin
	Decreasing at a steady rate	Moving towards the origin

Nonlinear functions		From the Origin:
	Increasing fast to slow (increasing, but slowing down)	Moving away from the origin
	Increasing slow to fast (increasing is speeding up)	Moving away from the origin
	Decreasing fast to slow (decreasing, but slowing down)	Moving towards the origin
	Decreasing slow to fast (decreasing is speeding up)	Moving towards the origin

Oct 18-7:28 AM