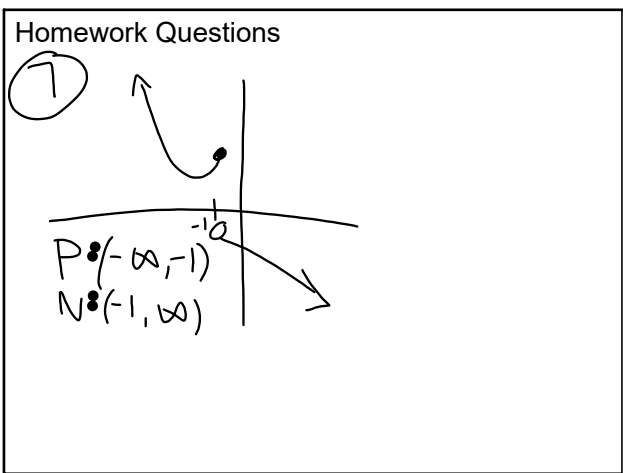


Key Features Quiz
 Calendar Math
 Homework Questions
 3.4 Objective: State where the graph is positive and negative.
 3.5 Objective: State the end behavior of the graph and determine the symmetry.

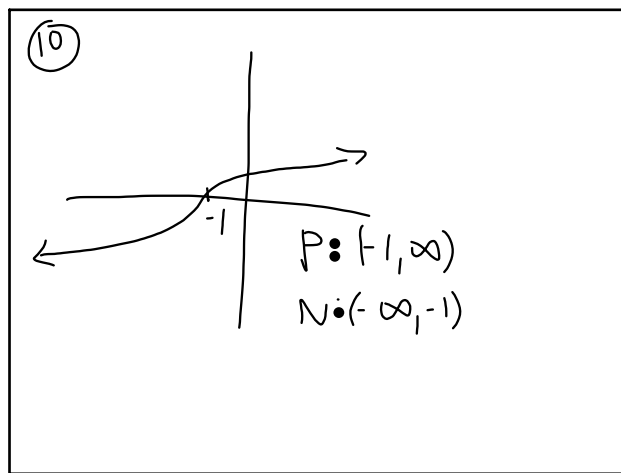
Oct 24-11:27 AM

Calendar Math

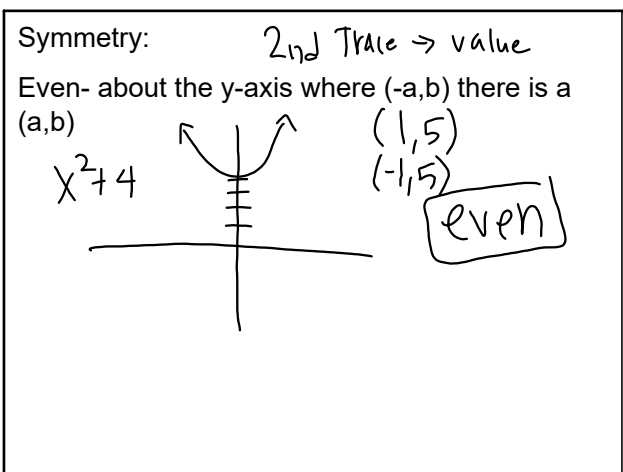
Oct 24-11:29 AM



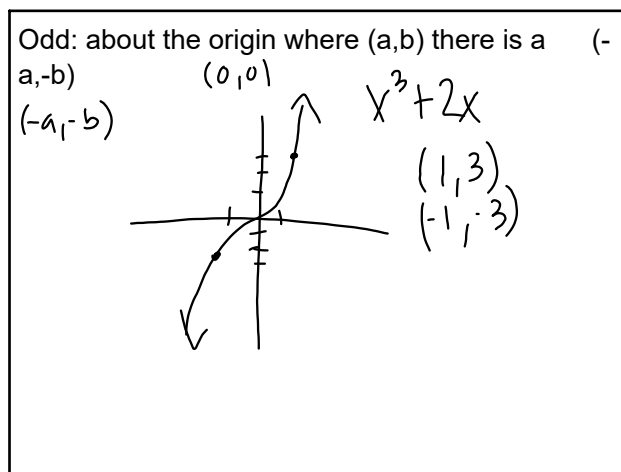
Oct 24-11:29 AM



Oct 26-12:00 PM

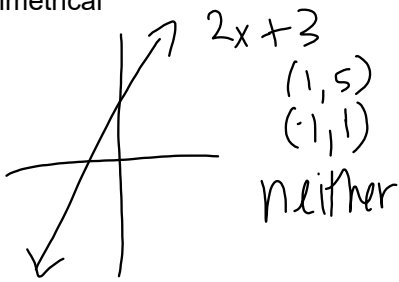


Oct 24-11:30 AM



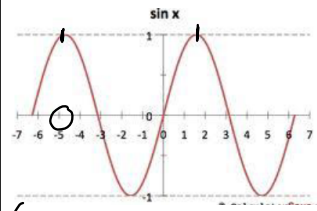
Oct 25-5:40 PM

Neither- when there are no points on the graph that are symmetrical



Oct 25-5:40 PM

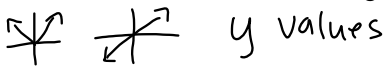
Periodicity: interval on which the graph repeats.



$(-\infty, 2)$
 7 period

Oct 25-5:40 PM

End Behavior: where the ends of the graph are



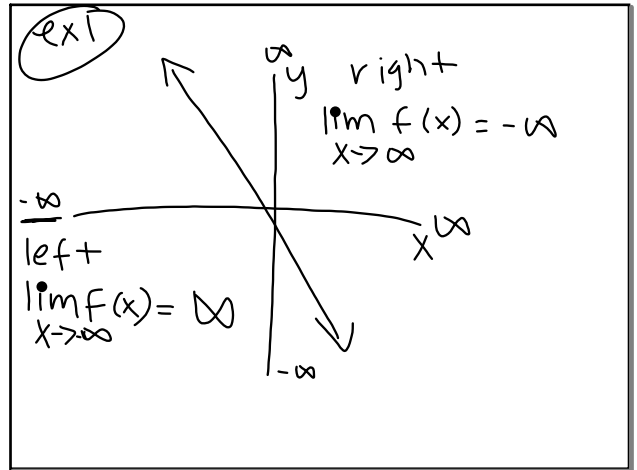
Left End Behavior:

$$\lim_{x \rightarrow -\infty} f(x) =$$

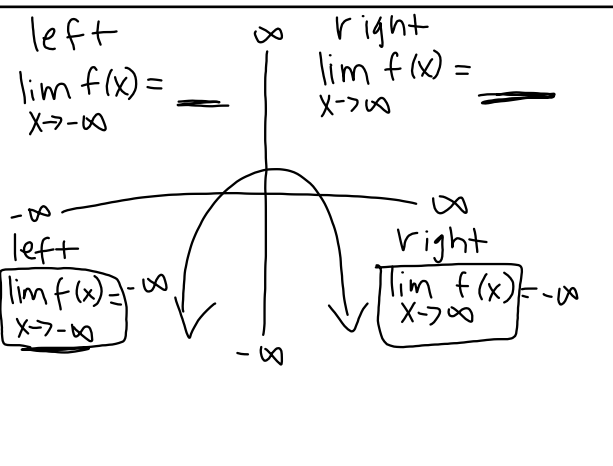
Right End Behavior:

$$\lim_{x \rightarrow \infty} f(x) =$$

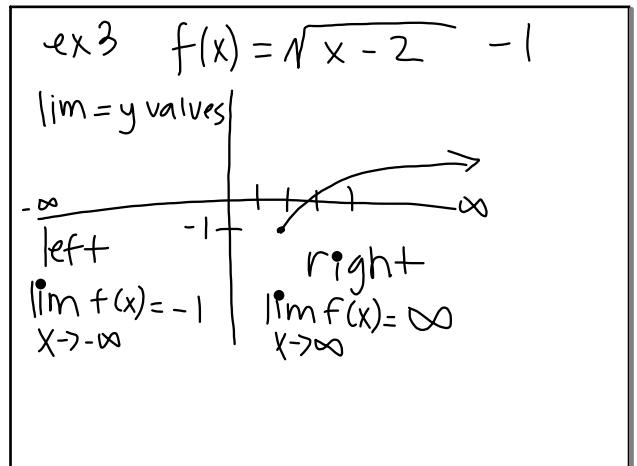
Oct 25-5:41 PM



Oct 26-12:21 PM



Oct 26-12:23 PM



Oct 26-12:28 PM