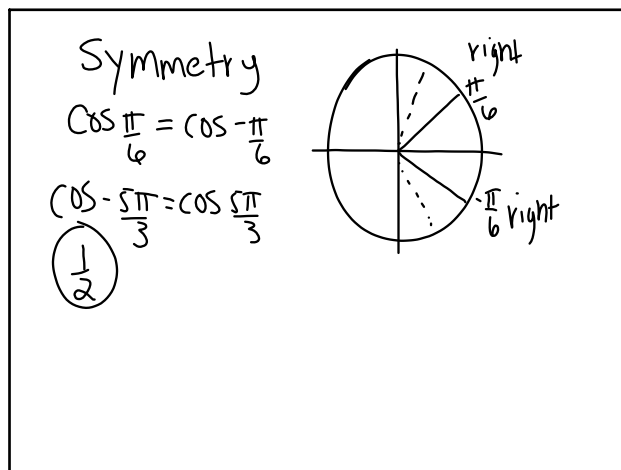


Feb 13-1:08 PM



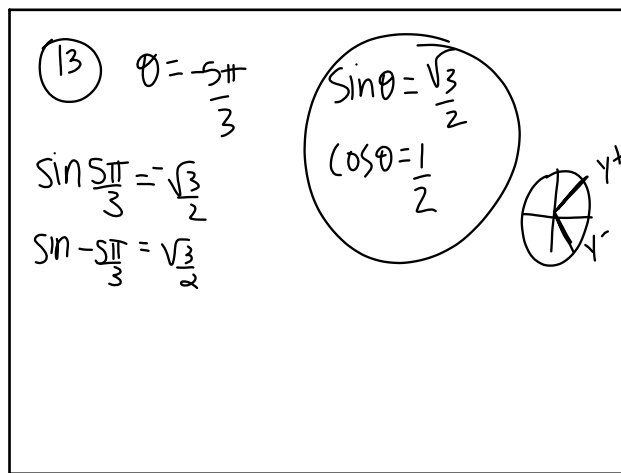
Feb 13-1:14 PM

$\sin -\frac{\pi}{6} = -\sin \frac{\pi}{6}$

$\sin \frac{\pi}{6} = \frac{1}{2}$

$\sin -\frac{\pi}{6} = -\frac{1}{2}$

Feb 13-1:17 PM



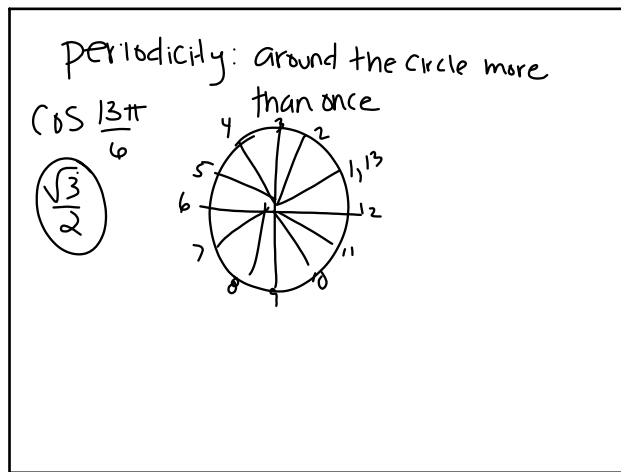
Feb 13-1:18 PM

Ignore the negative $\theta = -\frac{5\pi}{3}$

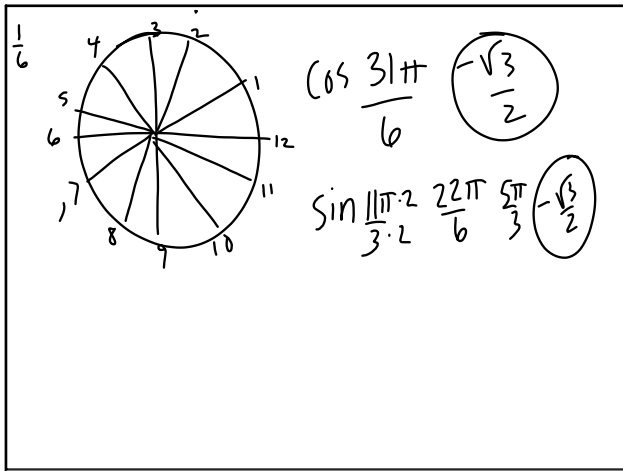
1. $\cos \frac{5\pi}{3}$ - stays the same

2. $\sin \frac{5\pi}{3}$ - switch the sign

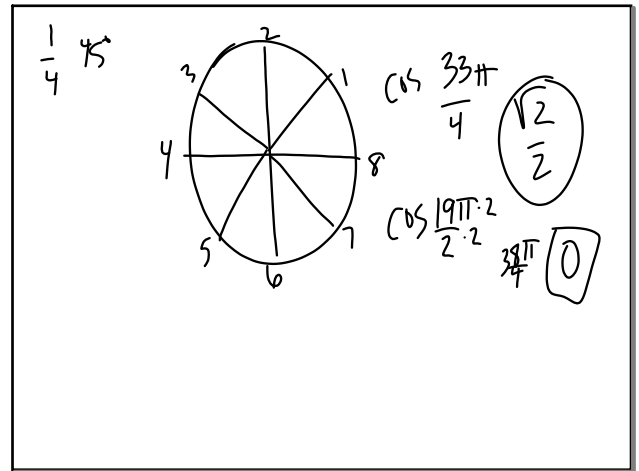
Feb 13-1:20 PM



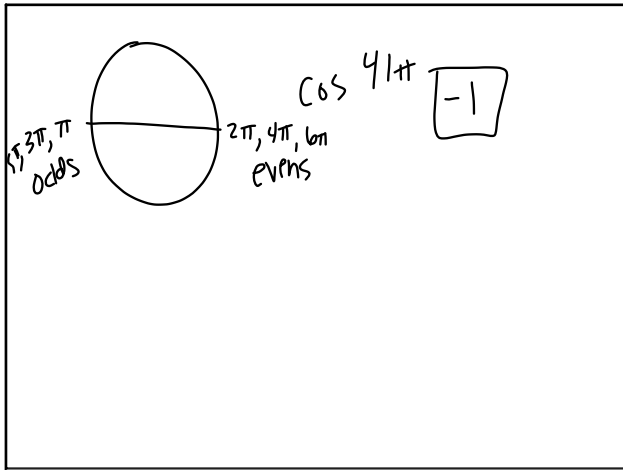
Feb 13-1:21 PM



Feb 13-1:24 PM



Feb 13-1:27 PM



Feb 13-1:30 PM